

Interpon D2525 Structura : Super Durable Powder Coatings

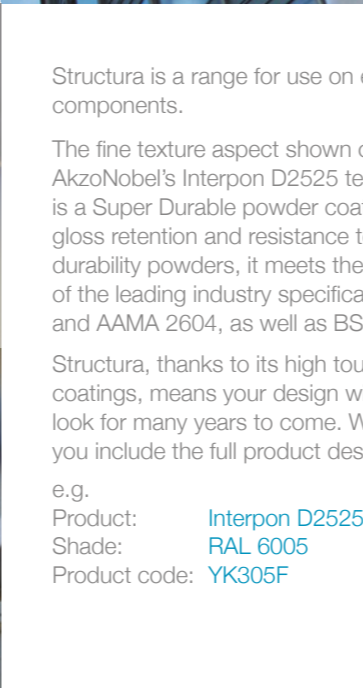
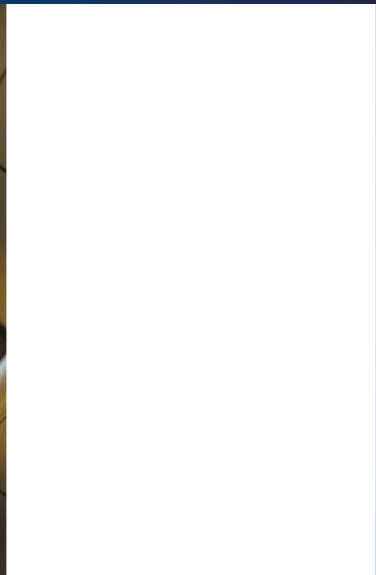


All of the powder coatings presented in this color card have been optimized to give the highest consistency of finish during the application processes.

However, slight variations could appear depending on the actual application specification or application of the powder. Our Technical support team is at your disposal.

Toutes les peintures en poudre de ce nuancier ont été étudiées pour apporter la meilleure reproduction d'aspect lors de la mise en œuvre. Toutefois, de légères nuances d'aspect peuvent être constatées en fonction des conditions d'application.

Consulter notre documentation avant préconisation ou mise en œuvre. Notre support technique est à votre disposition.



Structura is a range for use on exterior architectural metal components.

The fine texture aspect shown on this card is made with AkzoNobel's Interpon D2525 technology. **Interpon D2525** is a Super Durable powder coating that offers significantly higher gloss retention and resistance to colour change than standard durability powders, it meets the demanding weathering requirements of the leading industry specifications Qualicoat class 2, GSB Master, and AAMA 2604, as well as BS EN 12206.

Structura, thanks to its high toughness compared to smooth coatings, means your design will be long-lasting, keeping its stylish look for many years to come. When specifying or ordering, ensure you include the full product designation.

e.g.

Product: **Interpon D2525 Structura**
Shade: **RAL 6005**
Product code: **YK305F**

Structura est une gamme de peintures en poudre destinée au revêtement d'éléments métalliques pour l'architecture extérieure.

L'aspect fine texture présenté sur ce nuancier est issu de la technologie Haute Durabilité Interpon D2525 d'AkzoNobel. **Interpon D2525** est une gamme de peinture en poudre Super Durable qui offre une excellente rétention de brillance et résistance au changement de couleur dans le temps, les revêtements Interpon D2525 satisfont parfaitement aux exigences des principales normes européennes pour l'architecture, parmi lesquelles Qualicoat Classe 2 ; GSB Master, AAMA 2604 et BS EN 12206.

La gamme Structura, grâce à sa dureté nettement supérieure aux aspects lisses, garantit à vos projets une conception durable qui gardera son esthétique pendant de nombreuses années. Lors de la prescription ou la commande d'un produit de la gamme Structura, assurez-vous de bien mentionner la désignation complète du produit.

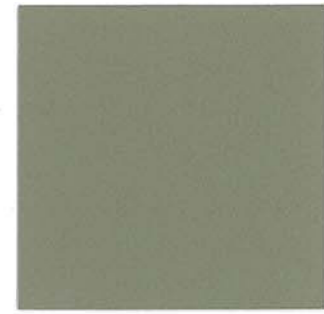
Par exemple

Produit : **Interpon D2525 Structura**
Teinte : **RAL 6005**
Code produit : **YK305F**

For more information or to request a sample speak to your local representative or visit www.interpon.com

Natural and dense shades

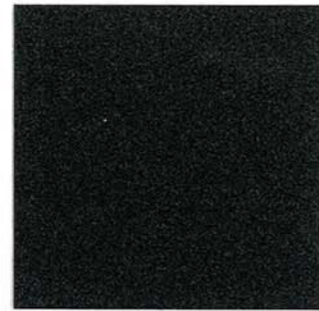
Fresh and light shades



RAL 7034



RAL 6003



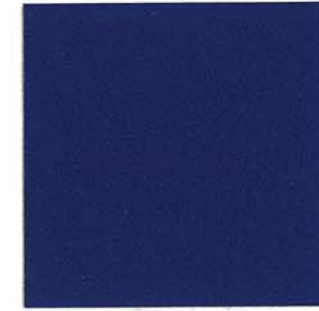
RAL 9005



RAL 7024



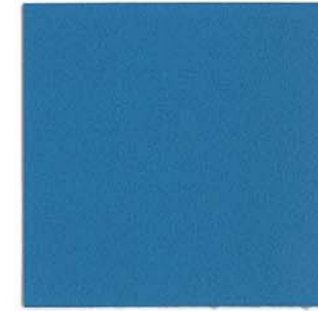
RAL 9016



RAL 5010



RAL 5023



RAL 5024



RAL 6005



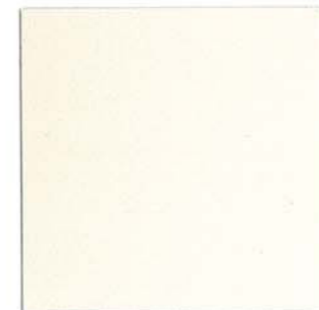
RAL 6009



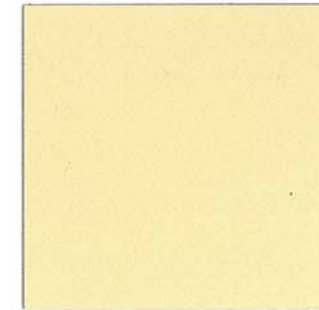
RAL 7006



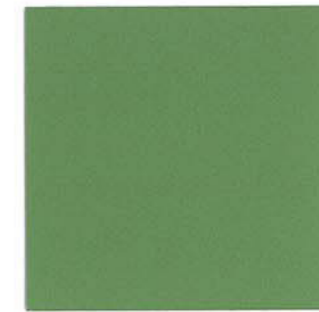
RAL 7022



RAL 1013



RAL 1015



RAL 6021



RAL 6017

YL334F

YK303F

YN305F

YL324F

YA316F

YJ310F

YJ323F

YJ324F

YK305F

YK309F

YL306F

YL322F

YD313F

YD315F

YK321F

YK317F

For more information or to request a sample speak to your local representative or visit www.interpon.com



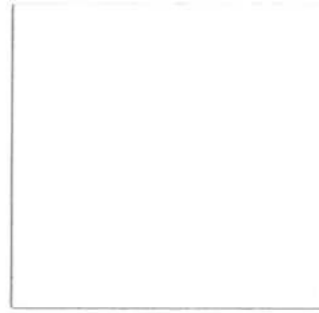
Neutral and strong shades

Mineral and deep shades



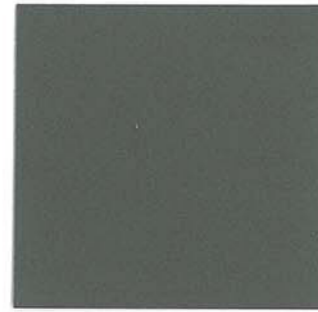
RAL 6029

YK329F



RAL 9010

YA310F



RAL 7039

YL339F



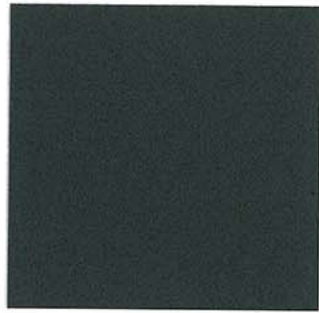
RAL 7040

YL340F



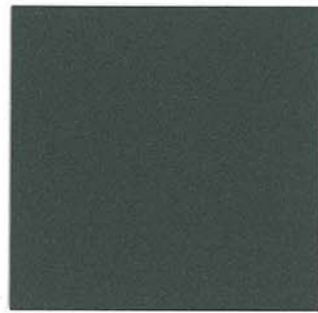
RAL 3004

YG304F



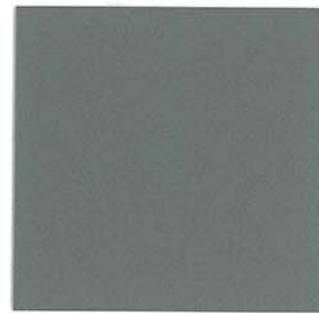
RAL 7016

YL316F



RAL 7012

YL312F



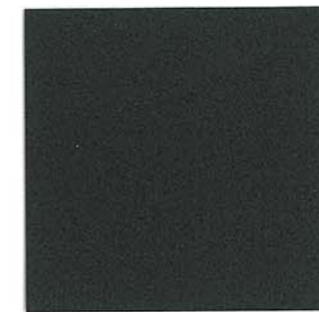
RAL 7037

YL337F



RAL 7035

YL335F



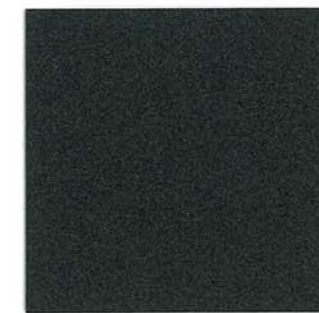
RAL 8019

YM319F



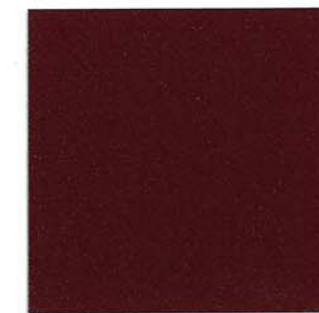
RAL 7015

YL315F



RAL 7021

YL321F



RAL 3005

YG305F



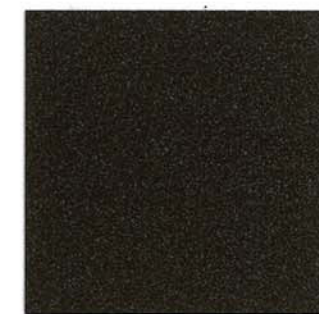
RAL 8011

YM311F



RAL 5003

YJ303F



RAL 8014

YM314F



Visit your local Interpon website for further information or scan to order samples



For more information or to request a sample speak to your local representative or visit www.interpon.com





Follow AkzoNobel Powder Coatings
on Facebook



Visit our Global Website: www.interpon.com
or speak to your local representative

AkzoNobel endeavours to ensure the information contained in this publication is correct at the time of printing. All products referred to and any technical advice provided is subject to the standard terms and conditions of sale of the AkzoNobel supplying company.

Copyright ©2016 Akzo Nobel Powder Coatings Ltd. Interpon is a registered trademark of AkzoNobel. Issue 4 - 09/2016. Printed in Italy.

Interpon®